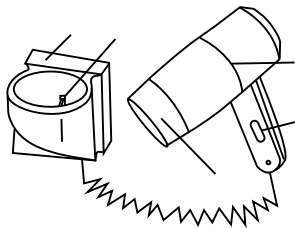


Thanks for choosing our products , for better service , please read all the instructions before using.

Product features

Wall-mounted hair dryer is the new style product with new concept. Its advantage of dual switch, overhead automatic protective setting, make it more safety. The hair dryer is using the new technology, with the high heating efficiency. the hair dryer is fashion design, low noise, comfortable hot wind. It's a ideal choice for hotel and family.

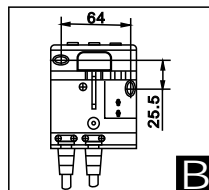
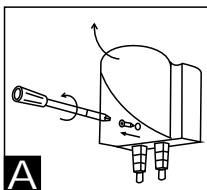
Components



1. Setting
2. Power switch
3. Hair dryer body
4. Shift switch
5. Air outlet

Don't install the hair dryer in bathroom and other moist places .

How to install

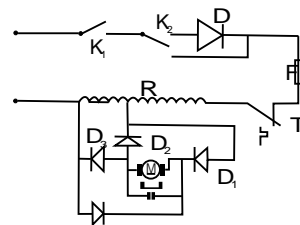


1. According to the picture 1, use the cross screwdriver to Loose the screws of the setting ,and discharge the setting.
2. According to the dimension on the picture 2, drill 2-6mm install holes and use the toggle and screw to fix the setting.
3. Use the original screw to fix the setting, check the power Switch, if it cannot work well, install again. Insert the hair Dryer into the setting, then it can use.

How to use

1. Switch on general power and take out the hair dryer body, then the hair dryer will work when the spring button is lower heating.
 - 0 Shift Stop to work.
 - 1 Shift Slow speed working, can finalize the hair design.
 - 2 Shift Full speed working, can dry the hair quickly.
2. Insert the hair dryer body into the setting, then the hair dryer stop to work.
3. Please do not stuck the rear air inlet with your hand or other stuff when the hair dryer is working, in order to avoid the temperature limiter to stop working automatically in the over temperature.

Electrical principle Chart



Technical Data

Voltage : 220V~50Hz
Power : 1000w

Electric shock protection :

Notes

1. Install the hair dryer away from the place where people taking the bath.
2. Avoid using the hair dryer near the piscina and basin, to avoid the humidity.
3. If the wire can not work well or broken, ensure the safety, change the wire by the manufacturer or professional repairman.
4. Please do not install the hair dryer above the piscina and basin, to avoid the humidity.
5. When using the hair dryer in the bathroom, pull out the power plug to cut off the electrical outlet to avoid the danger of the water. We suggest that install a electrical setting which rated surplus working electric below 30mA.
6. Please do not operate without the cover of the hair dryer.
7. Please do not use hand or other object to jam the inlet and outlet, and keep it clean.
8. To avoid the directly touch by the water.

Packing accessories

- One user manual
Screws bag : 2pcs of 4x20 screws
2pcs of 6 toggles